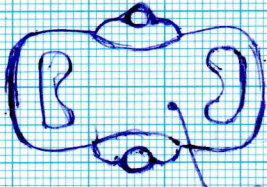
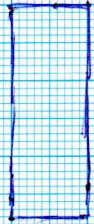


PIEZA 2423
canostillo



→ grosor Anul.

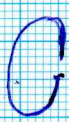
(14 udes.)



2.8 x 1 cm

grosor = 0.6 mm.

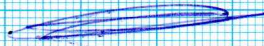
(13 udes.)



$\phi = 1.1 \text{ mm.}$
long = 3 mm.

(26 udes.)

KILKAI
(simple)

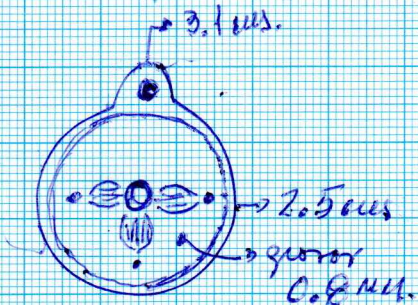


ferr: 16% Al
metal: ALPACA
industrial

79 partes

- Alpaca industrializado
- Mandrel plano soldado a la platea
- Canostillo contacto x serrilla y estam-
pado con curio circular y se pul
luxe larga.
- Mandrel de alambre soldado
a la platea
- pin estampado con curio 0, 1, 2,
3, 4, 5, 6, 7, 8, 9, Burilado circular en el
contorno.

pieza confeccionada ~~en~~
finales del siglo XX.



(24 udes.)